

Swedish Flu Data for WA

February 2017



Extraordinary care. Extraordinary caring.SM

Flu-related deaths by age

Every year, the flu contributes to countless hospitalizations and visits to the doctor or ER.

The risk of flu-related death is greatest for people 65 and older.

This flu season, 76 official influenza deaths have been reported in Washington. All deaths affected the older population or those with underlying health conditions.

Count and rate of reported laboratory-confirmed influenza-associated deaths by age group, Washington, 2016-2017 season to date

Age Group (in years)	Count of Deaths	Death Rate (per 100,000 population)
0-4	0	0
5-24	2	0.11
25-49	2	0.09
50-64	7	0.50
65+	65	6.93
Total	76	1.11

*Representative of deaths that were only reported to the Washington State Department of Health



SWEDISH

Extraordinary care. Extraordinary caring.SM

Influenza-like-illness visits

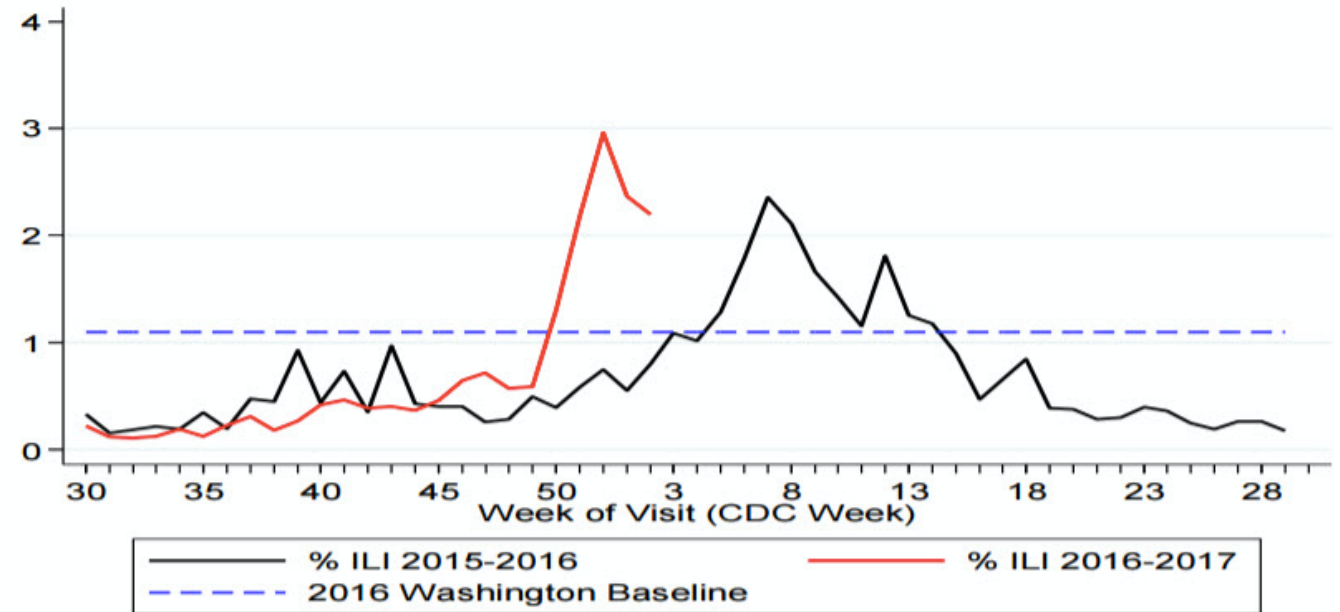
An influenza-like-illness (ILI) is a condition that causes flu-like symptoms.

This year, flu season hit earlier and harder. Last year, the peak didn't occur until late February/early March.

During week 2 of 2017 (Jan. 8 to 14), the flu reached its peak of 4,145 instances, which represented 2.2% of ILI visits.

Despite the January peak, it is NOT too late to get vaccinated.

Percentage of ILI Visits Reported by Sentinel Providers, Washington, 2015–2017

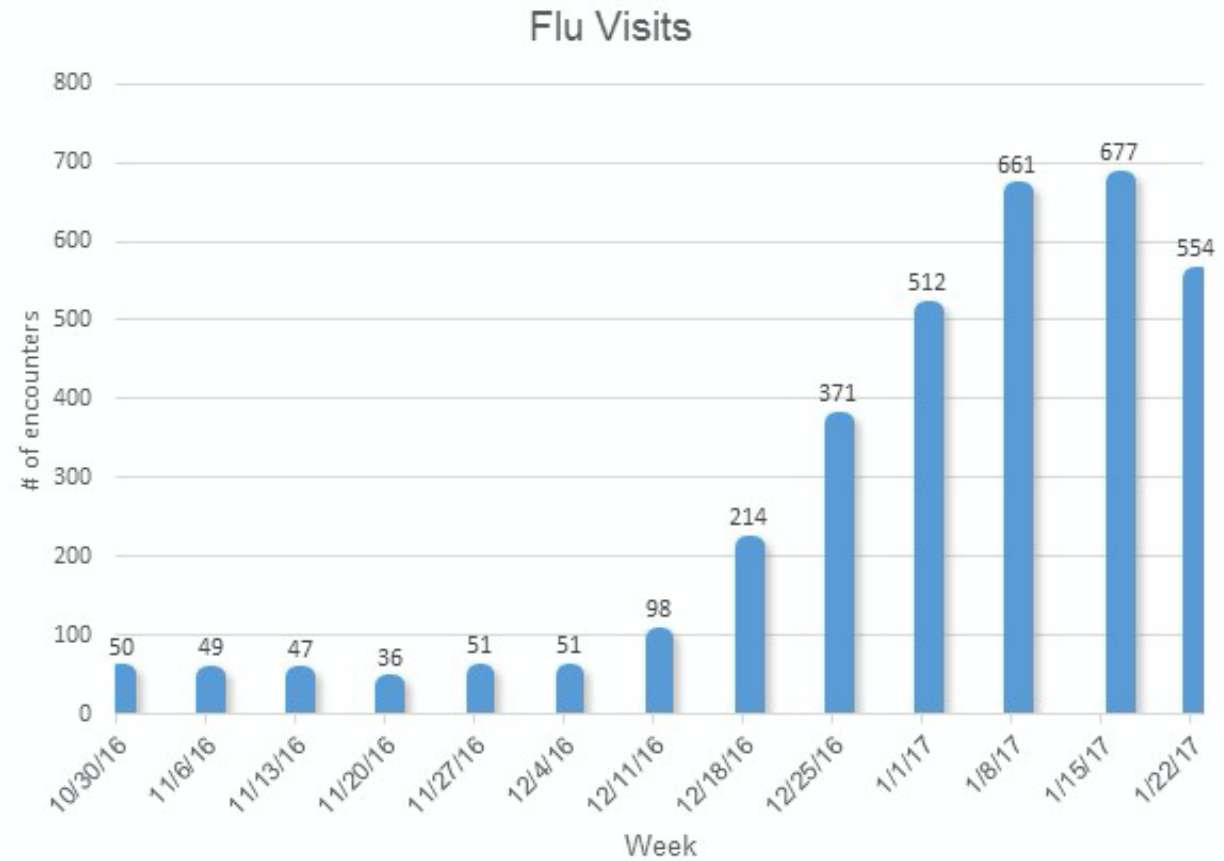


SWEDISH

Extraordinary care. Extraordinary caring.™

Flu visits at Swedish

The number of flu-related visits at Swedish began increasing in mid-December and peaked in mid-January. This pattern is consistent with the state and national data.



SWEDISH

Extraordinary care. Extraordinary caring.™

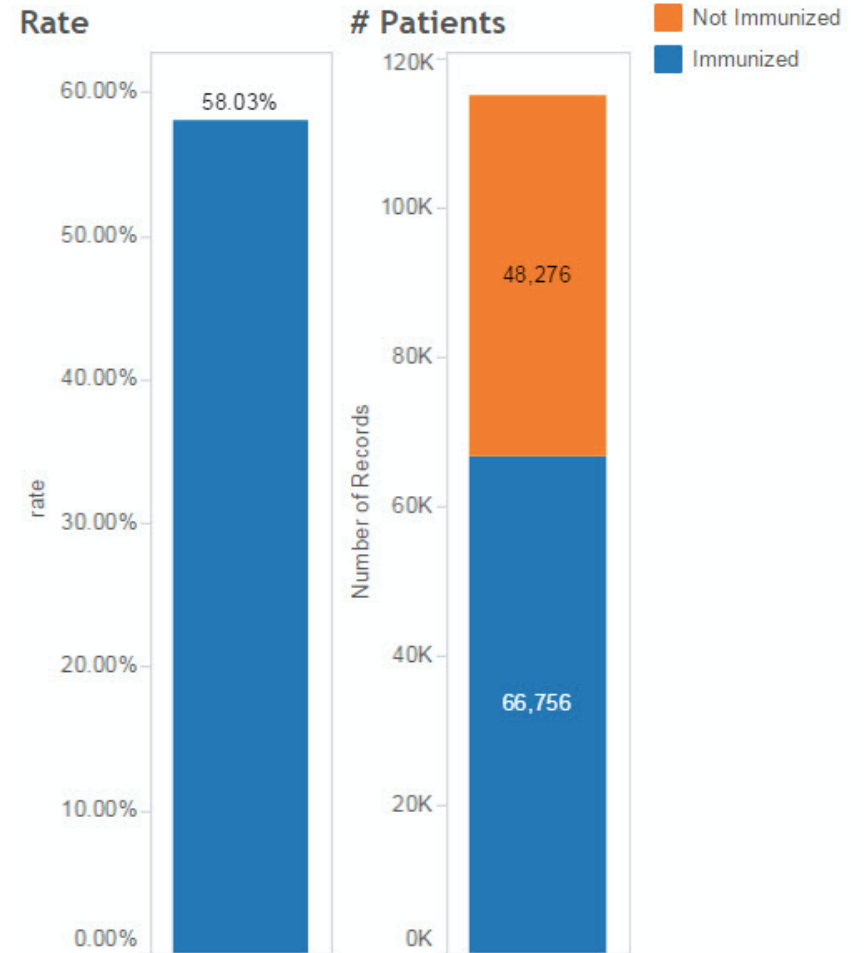
Flu vaccine

Getting the flu vaccine is key to protecting yourself and preventing the spread of influenza.

“Herd immunity” occurs when enough people are vaccinated to slow the spread of the flu virus from person to person. One of the biggest reasons to vaccinate a child is to help protect their grandparents and other older loved ones.

At Swedish, 58% of patients who have recently visited us have received a flu vaccine. This doesn't include patients who got a vaccine somewhere other than Swedish, such as the office or drugstore. It doesn't matter where you get the vaccine as long as you get one.

It's not too late to get a flu shot!



SWEDISH

Extraordinary care. Extraordinary caring.™