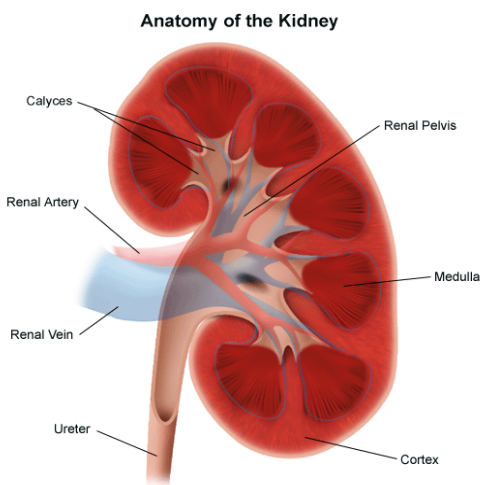


## Kidney Scan: (Lasix Renogram)

### Definition:

A Kidney Scan is an exam that is used to image the anatomy and function of the kidneys.



### Reasons for the test:

- Evaluate urinary tract obstruction
- Suspected urinary leak (post kidney transplant)
- Flank pain
- Hydronephrosis

### Prior to the test:

You must be well hydrated for the exam. Drink at least 24 to 36 oz. of water 1 to 2 hours before the start of the exam.

### Description of the test:

The purpose of this test is to trace blood flow through the kidney. Its secondary purpose is to see how long it takes urine to pass out of the body. You will be given a small dose of a radioactive tracer through an intravenous (IV) line. Imaging will begin as the tracer is being injected. 8 to 10 minutes into the imaging you will receive a dose of Lasix. The Lasix is used to stimulate urine flow as the tracer is followed via the camera.

- Lasix is a diuretic (water pill), the side effects include frequent urination and possible constipation. Continue to drink plenty of water after the exam to avoid dehydration and constipation.

The exam takes about 45 minutes. It is important that you remain as still as you can while the images are being taken.

### **After the test:**

The IV will be removed and the injection site will be checked for any redness and swelling.

### **Results:**

When the test is over the images will be processed and a radiologist specially trained in nuclear medicine will review them and send the results to your doctor. Your doctor will then discuss the results with you.