



# The Hill Antireflux Repair at 5 Institutions over 25 Years

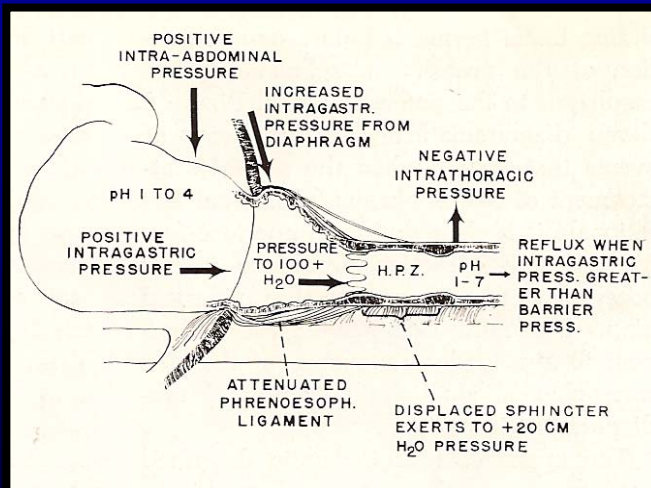
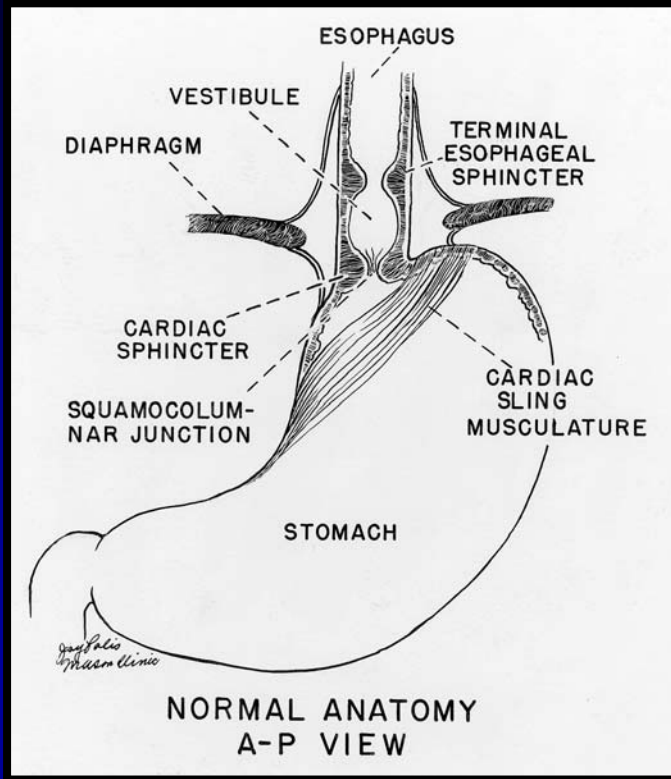
**Ralph Aye, Dagmar Rehse, Stefan Kraemer,  
Lucius Hill**

Swedish Medical Center and Cancer Institute  
Seattle, USA

Presented  
at the  
North Pacific Surgical Association

Seattle, WA  
November 14, 2008



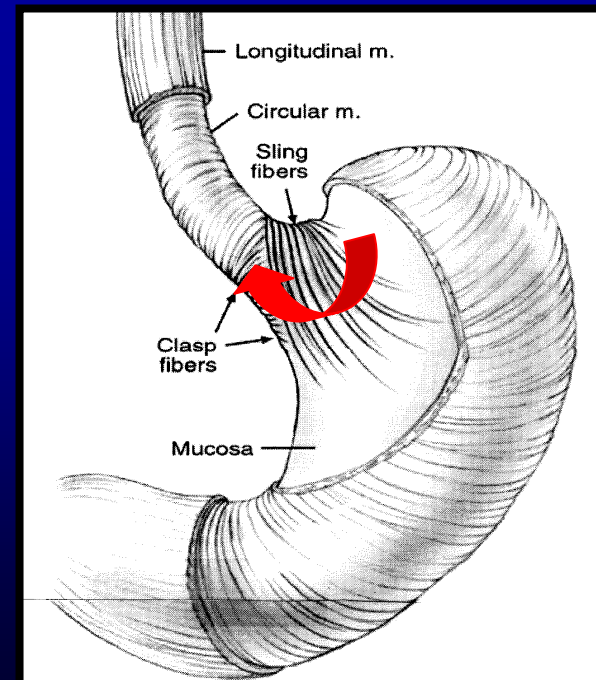
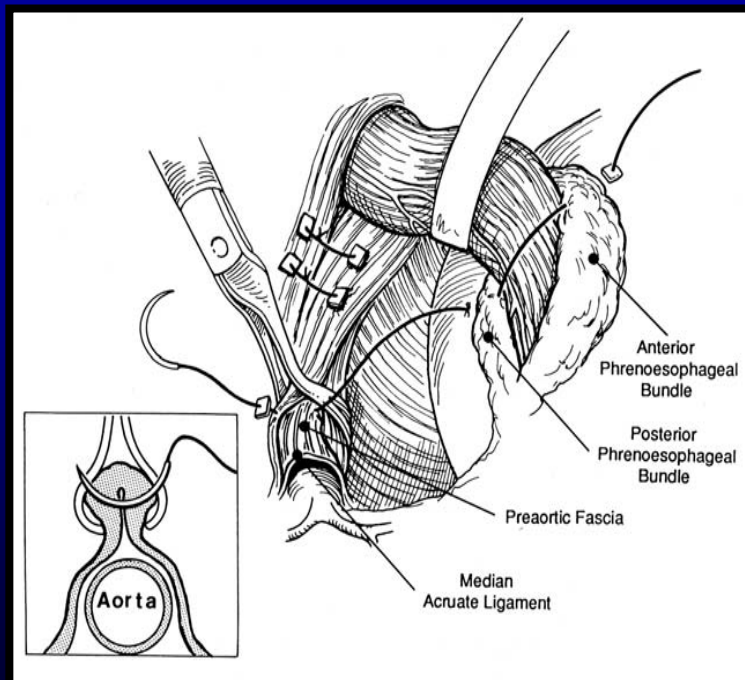


“I think you will all agree that we have heard this afternoon one of the milestones in the treatment of hiatus hernia. The physiologic studies have supported this thesis beautifully, and in my opinion there has been nothing that has compared with it at all in the past.” - Claude E. Welch MD

# HILL REPAIR

## ADVANTAGES

- excellent long-term results
- GEJ anchored to preaortic fascia
- no wrap to herniate / slip
- Demonstrated success in paraesophageal hernia, short esophagus, and stricture
- Can be used with IEM





SWEDISH MEDICAL CENTER



UNIVERSITY OF KANSAS



VIRGINIA MASON  
MEDICAL CENTER



MASSACHUSETTS GENERAL  
HOSPITAL, BOSTON



QUEENS UNIVERSITY,  
KINGSTON, ONTARIO



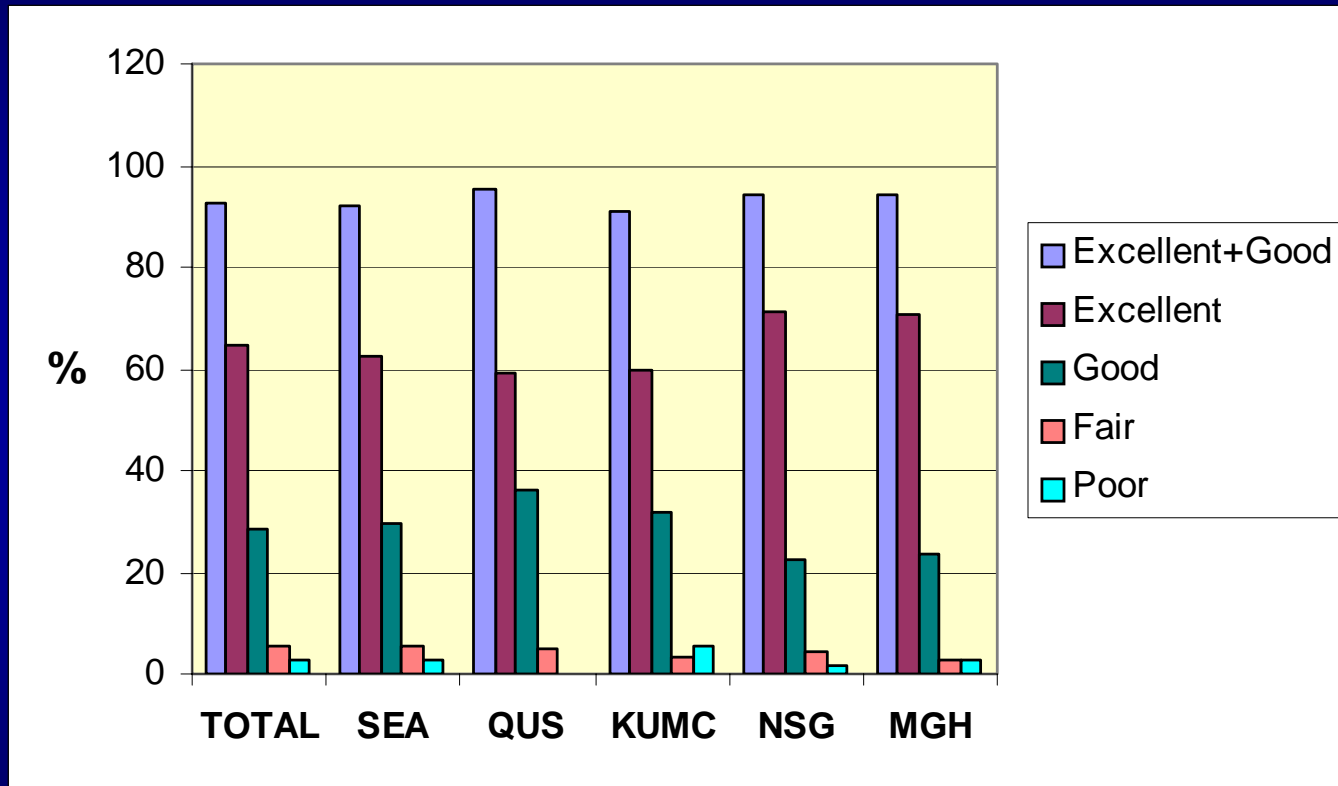
NORFOLK SURGICAL GROUP,  
NORFOLK, VIRGINIA

“Hill” Centers

“Non Hill” Centers

# E-G-F-P Scale

---



Good to Excellent: Hill **91.4%**, vs Non Hill **93.5%**  $p=0.25$

Total – **92.8%** rated results as G/E

# Re-operations, GE junction

---

- Hill                      26 (3.1%)
- Non Hill                4 (1.2%)      p= 0.059

# Conclusions

---

- In 1181 patients undergoing open Hill repair with median follow up of 9.98 years:
  - 93% of patients had good or excellent results
  - 22% were on antisecretory medications
  - 2.5% required GEJ re-operation
- Open Hill repair was successfully performed by surgeons not trained by Hill



Lucius D. Hill MD